



# Applying for Screening

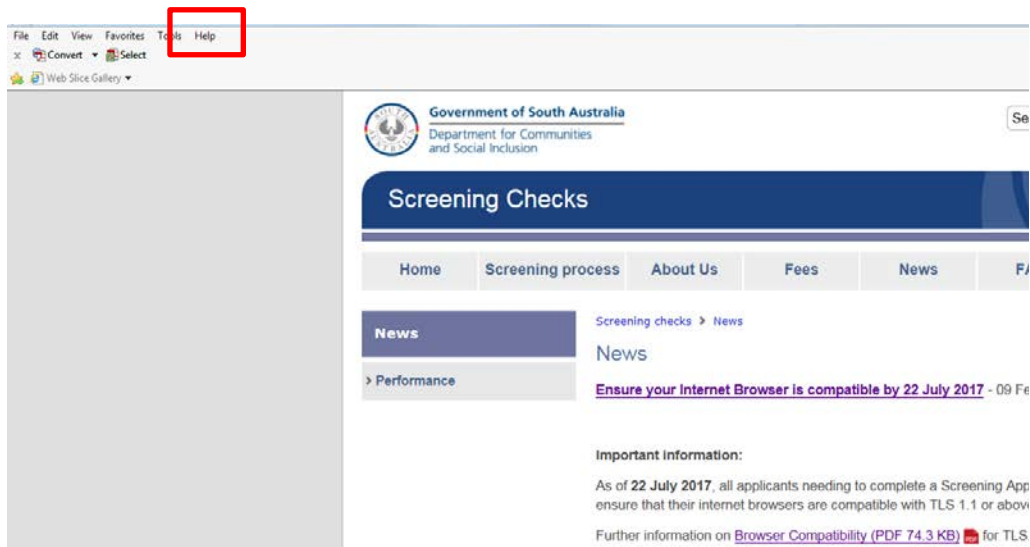
## Information on Browser Versions

### Identifying your Internet Browser Version details

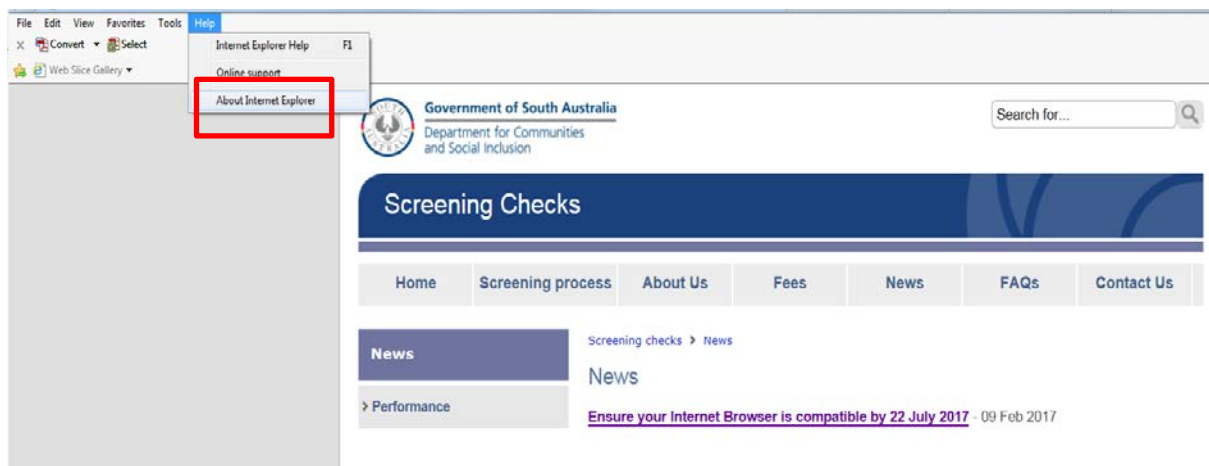
#### Internet Browser Version

In order to identify what Internet browser version you are running follow these steps:

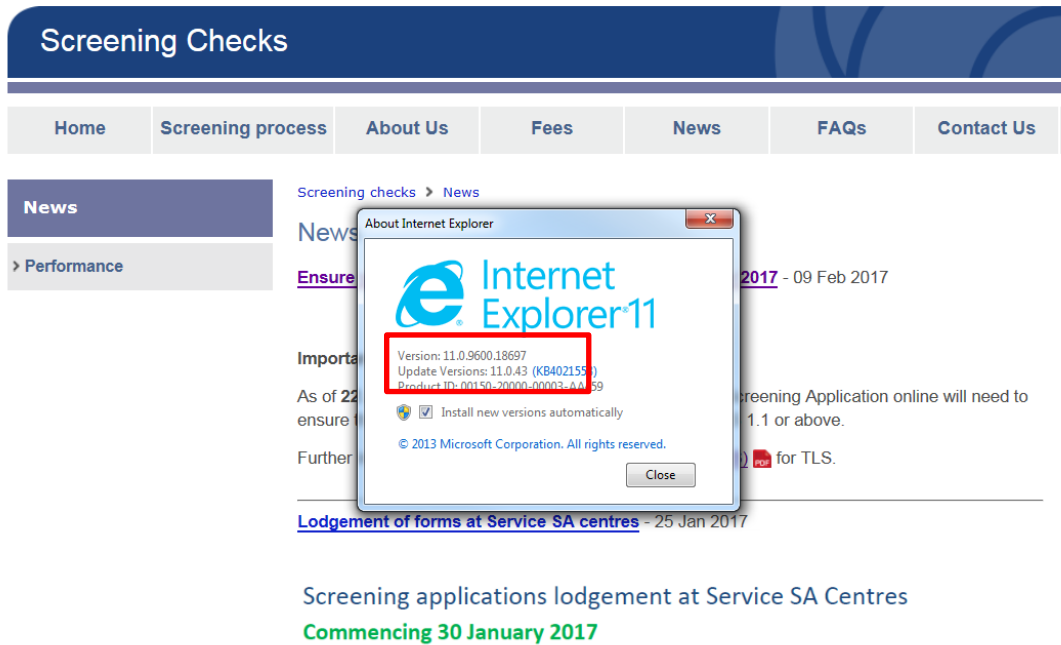
1. Go to the "Help" tab at the top of your internet browser



2. Select "About Internet Explorer"



3. A popup screen will appear advising you of the version details of your browser



## Test for compatibility

To quickly test to identify if your browser is compatible, open <https://tls1test.salesforce.com> within Internet Explorer. If you see a web page that resembles the below image and contains the text: "TLS 1.0 Deactivation Test Passed," then your Internet Explorer web browser is already compatible.



**You may need to contact your IT support for further assistance.**

### What is TLS?

TLS ensures that a connection to a remote endpoint is to the intended destination through encryption and endpoint identity verification. In order to maintain the highest security standards and promote the safety of your data as well as align with industry-wide best practices, the minimum required action is to enable TLS 1.1 or TLS 1.2 encryption protocol within your browser security settings.